

CONTRAPTOR

Cartesian Robot Construction Set

Version 1.2

History:

11/29/07 – 12/07/07 – Initial draft

12/10/07 – v1.0: Added print rulers

12/15/07 – v1.1: Linear sliding element: moved bearing screw holes, moved Teflon angle screw holes

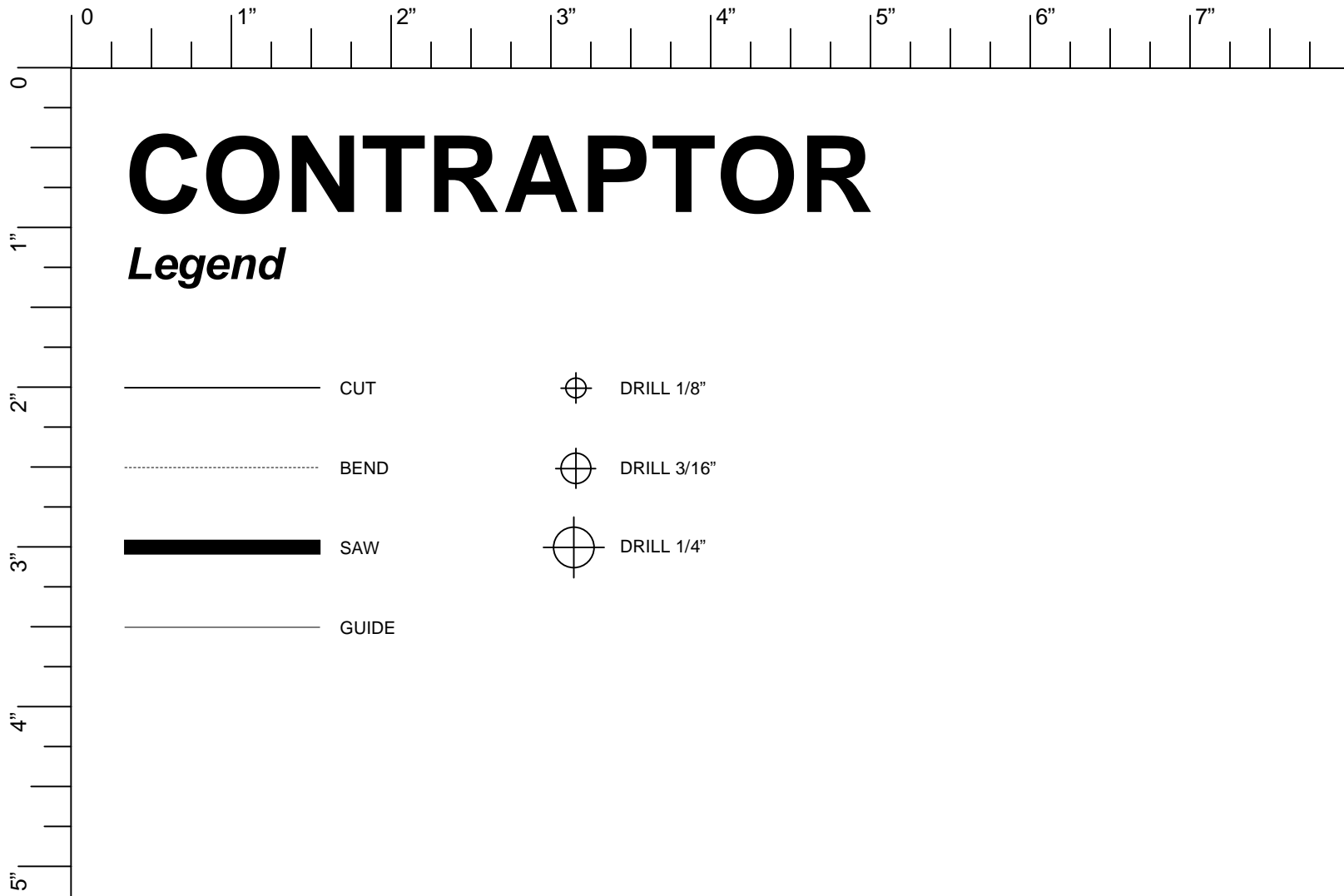
12/17/07 – v1.2: Linear sliding element: added guides for Teflon angle and coupling nuts

Threaded rod mount: changed rod hole diameter to $\frac{1}{4}$ "

Made bending lines thinner; rearranged some components to use less paper

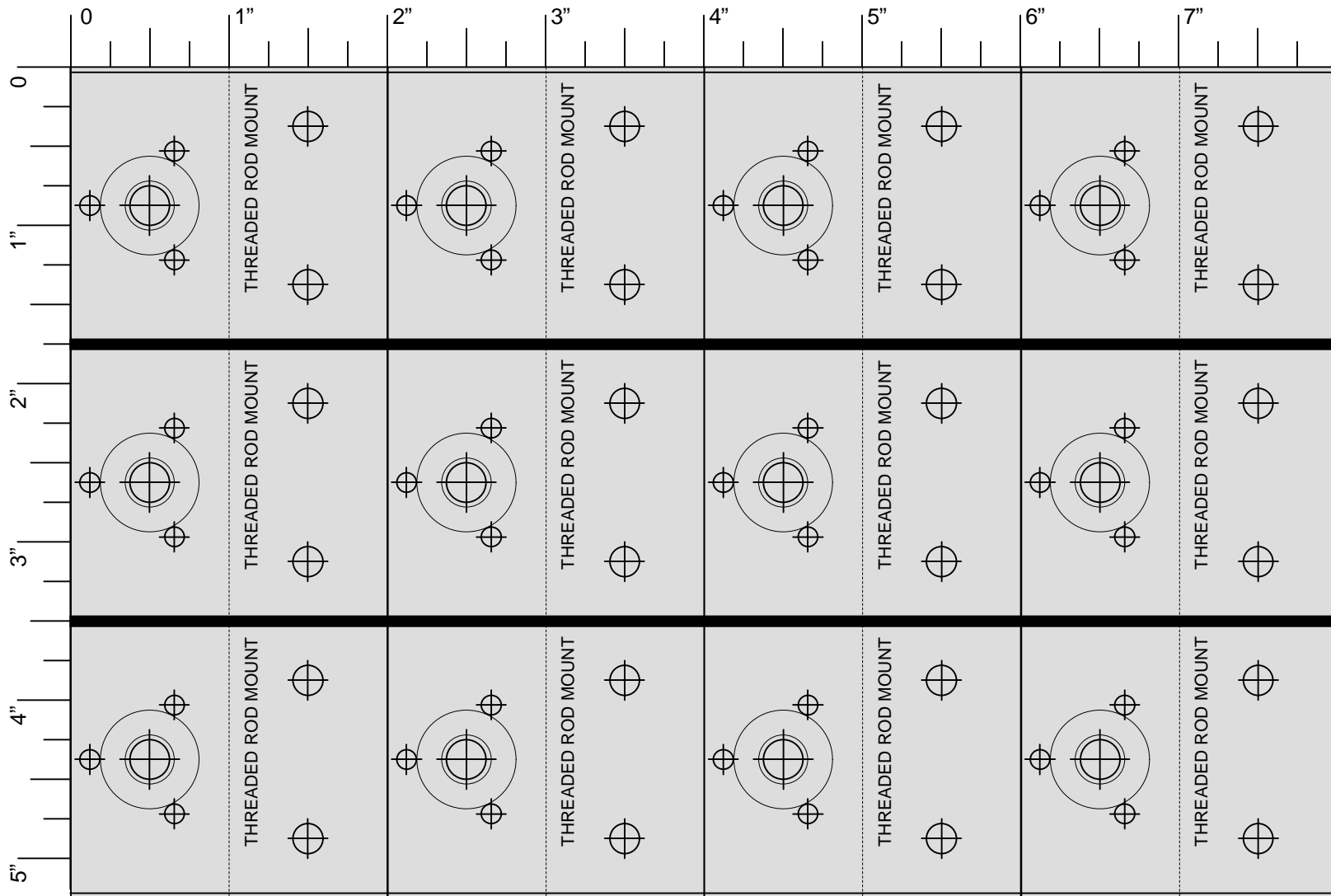
CONTRAPTOR v1.2

This work is licensed under Creative Commons
Attribution-Share Alike 3.0 License



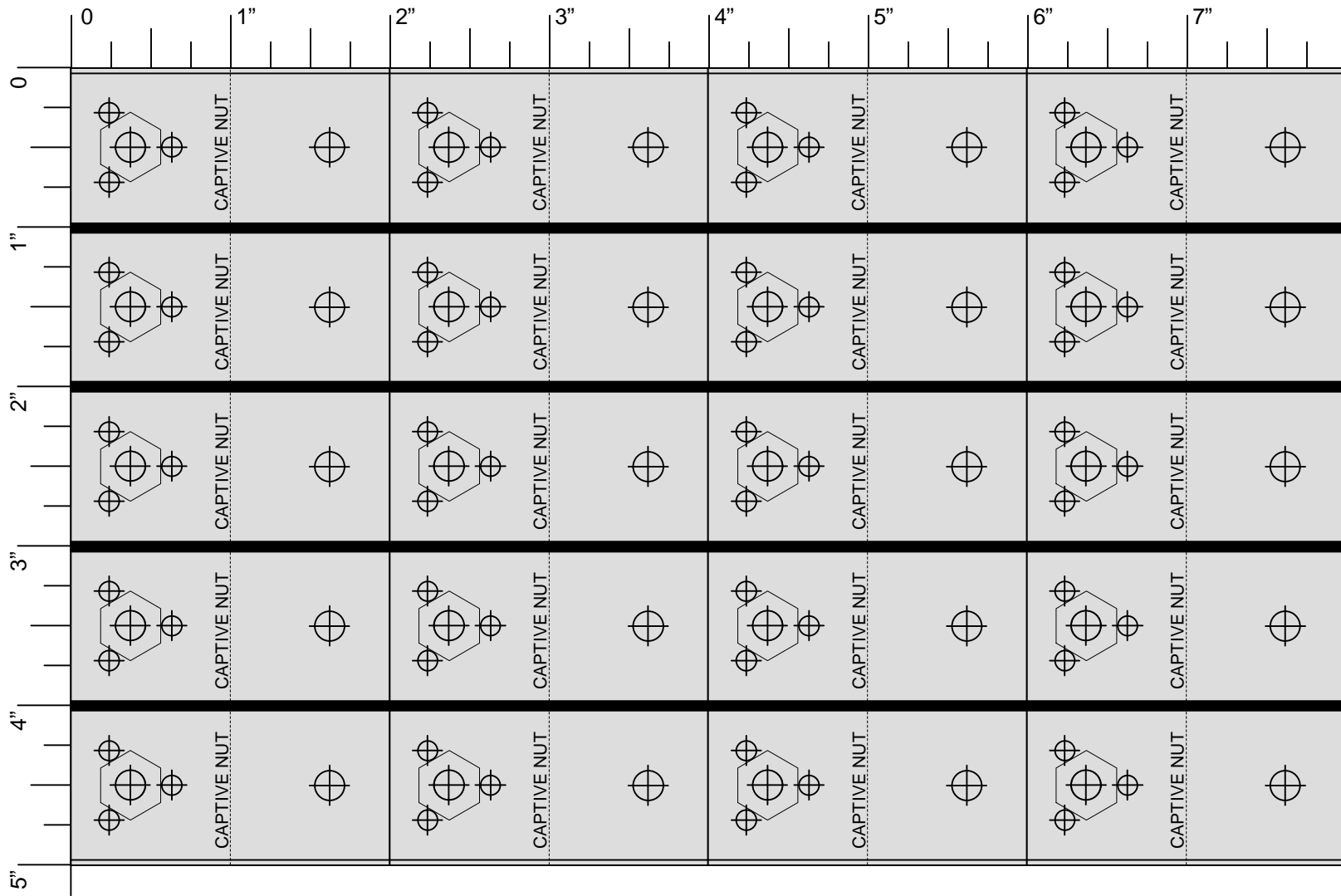
CONTRAPTOR v1.2

This work is licensed under Creative Commons
Attribution-Share Alike 3.0 License



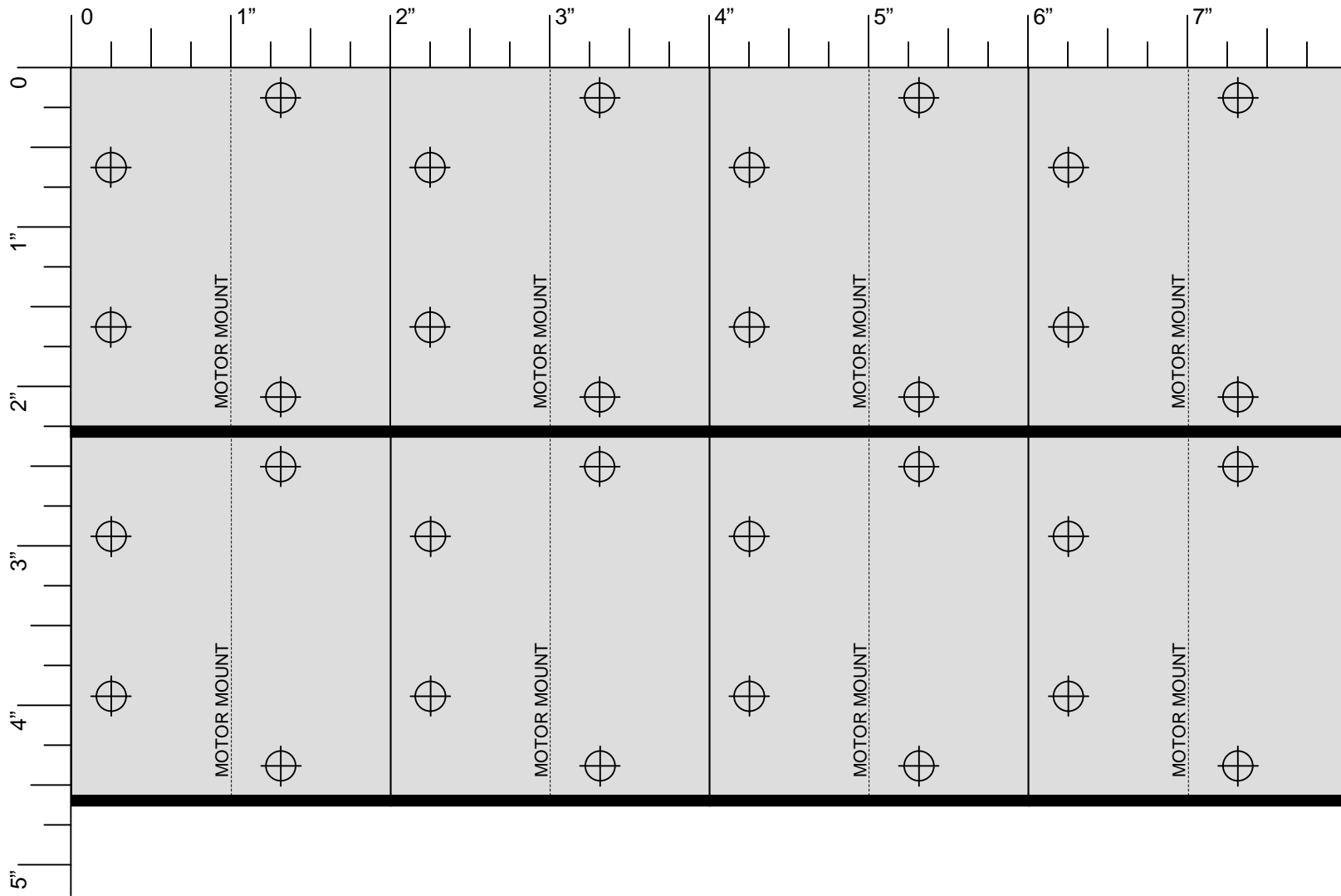
CONTRAPTOR v1.2

This work is licensed under Creative Commons
Attribution-Share Alike 3.0 License



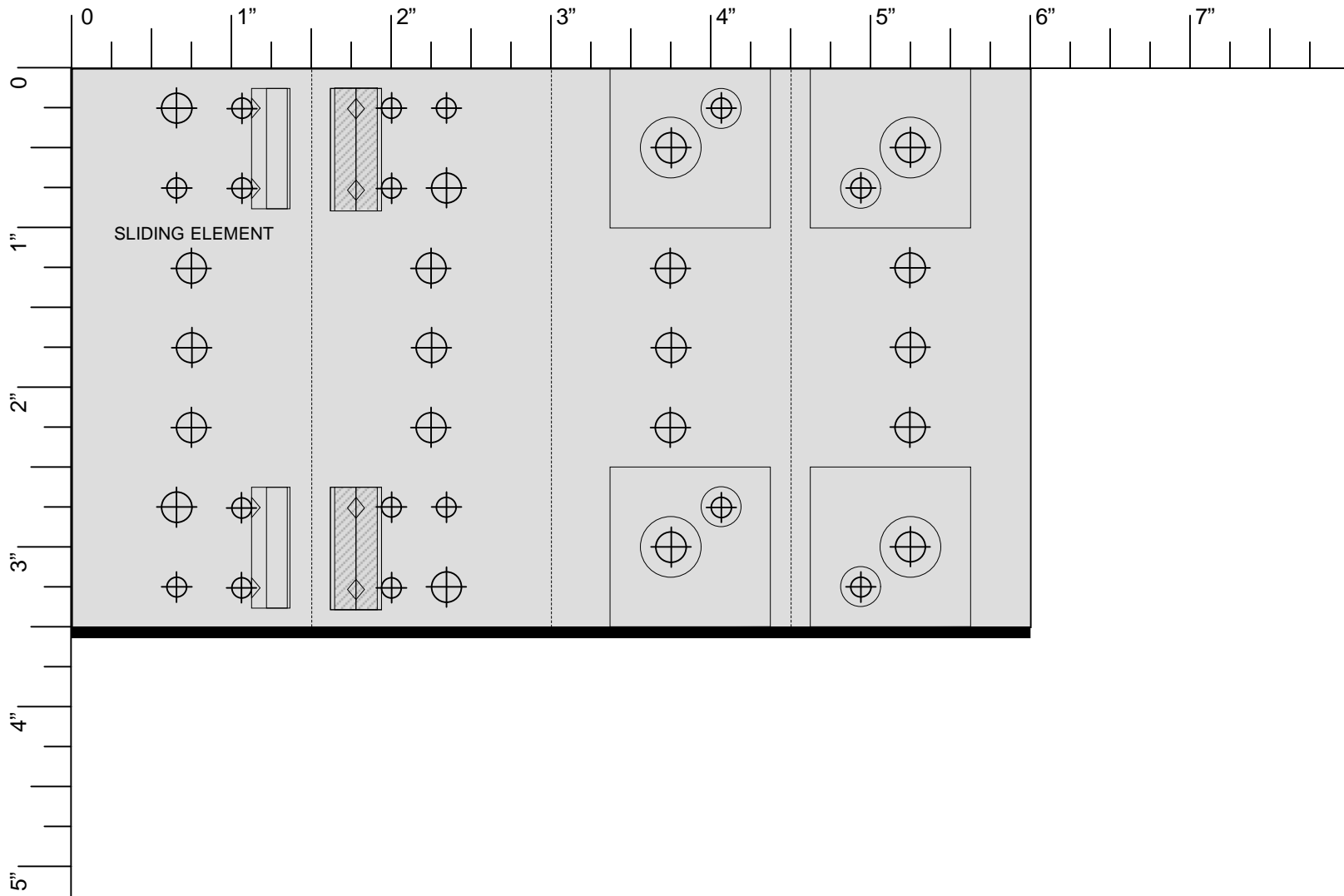
CONTRAPTOR v1.2

This work is licensed under Creative Commons Attribution-Share Alike 3.0 License



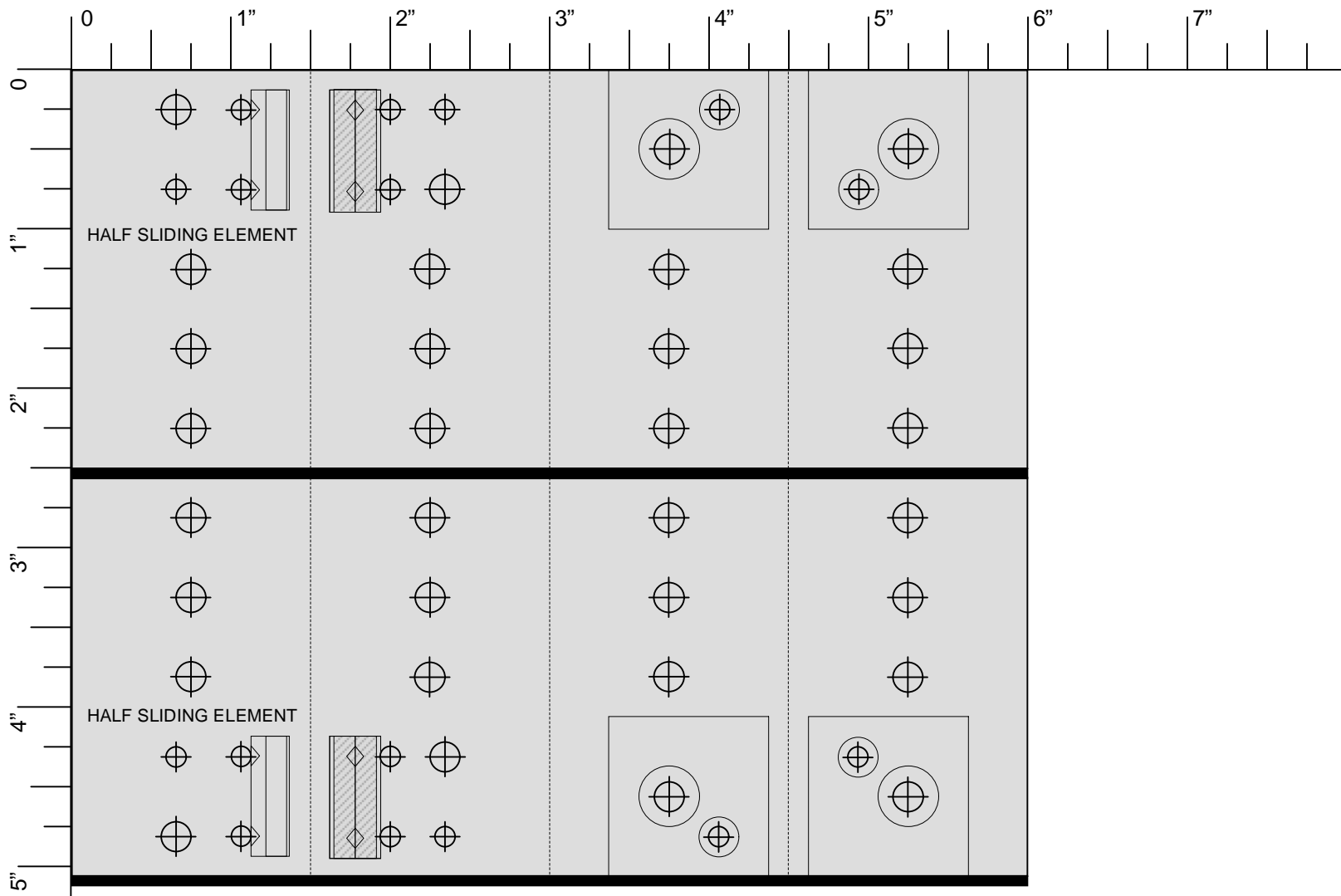
CONTRAPTOR v1.2

This work is licensed under Creative Commons
Attribution-Share Alike 3.0 License



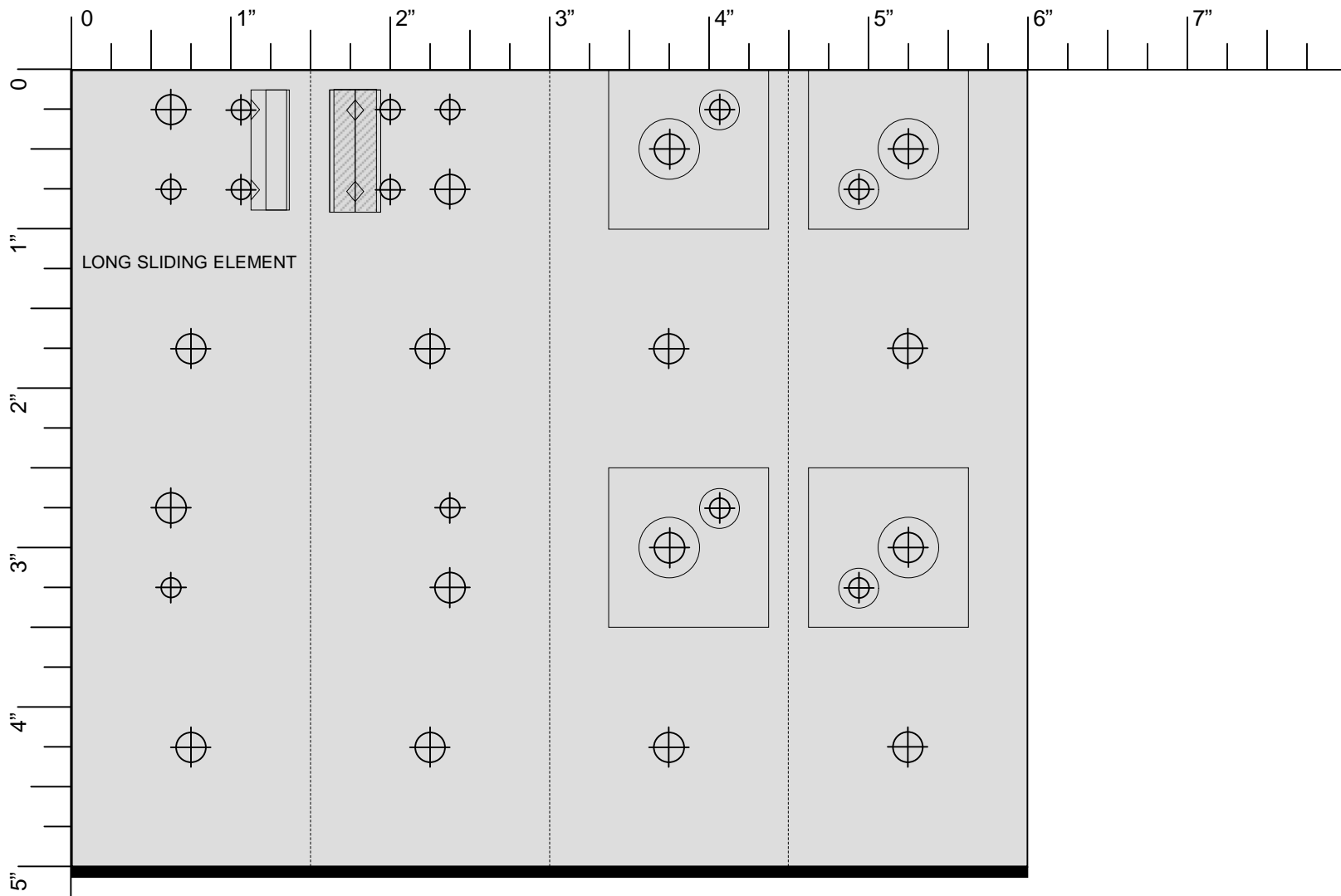
CONTRAPTOR v1.2

This work is licensed under Creative Commons
Attribution-Share Alike 3.0 License



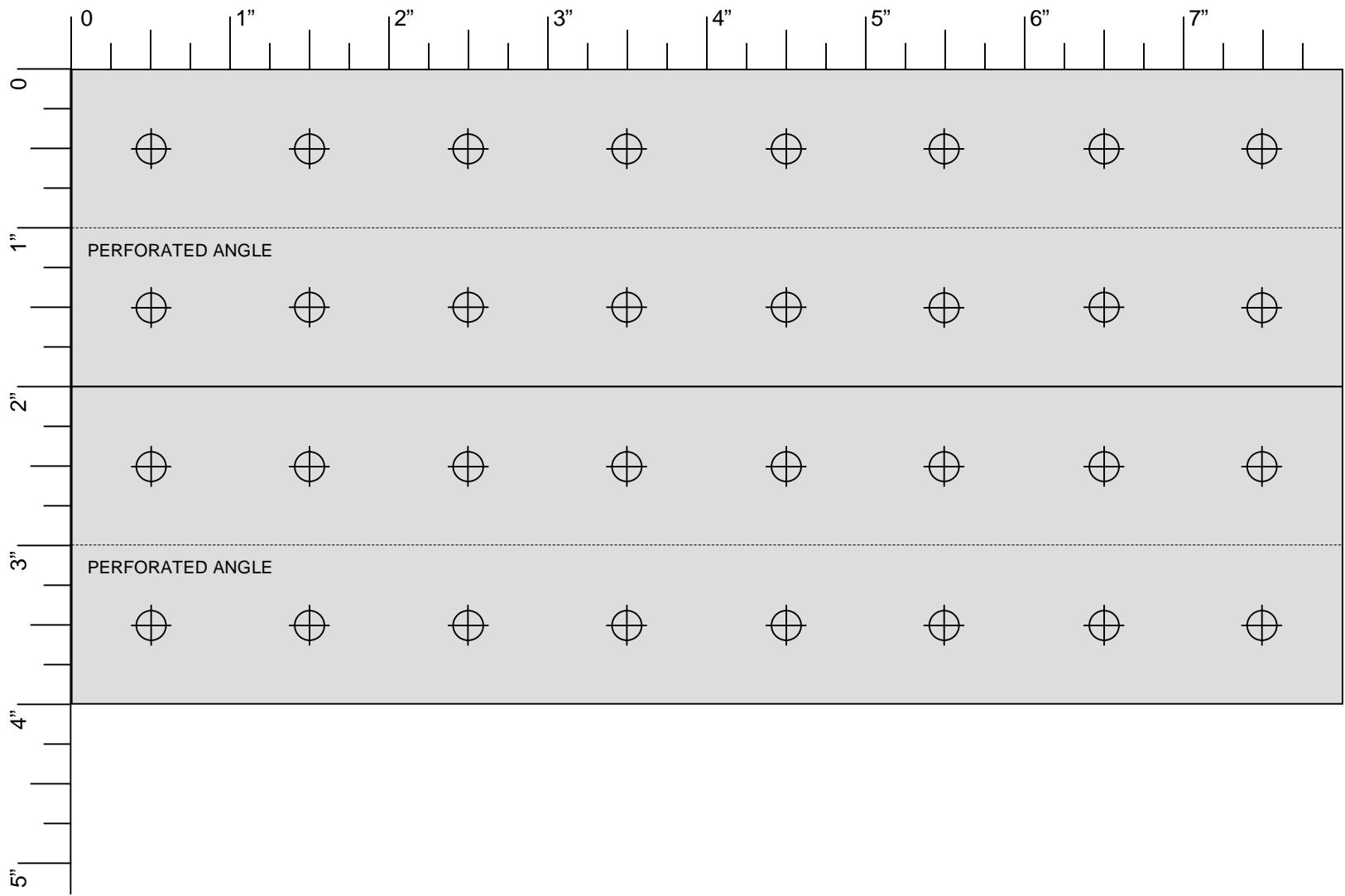
CONTRAPTOR v1.2

This work is licensed under Creative Commons
Attribution-Share Alike 3.0 License



CONTRAPTOR v1.2

This work is licensed under Creative Commons Attribution-Share Alike 3.0 License



CONTRAPTOR v1.2

This work is licensed under Creative Commons
Attribution-Share Alike 3.0 License